



**VIVAX**  
**METROTECH**



# vCamDrain

## Wireless Inspection System

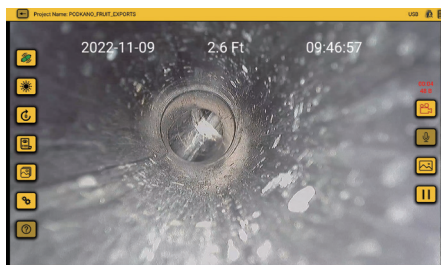
- Inspect lines from 1.5" to 3"
- Wireless reel used with mobile devices
- VMC App controls all reel functions
- Instantly share files
- Navigate p-traps and toilet traps
- 70 or 100-ft of custom pushrod

The vCamDrain features a Wi-Fi reel controlled by the vCam Mobile Controller (VMC) app. When connected to the reel by Wi-Fi, the VMC app controls the camera lights, distance counter reset, sonde and text writer. The app shows the reel's Wi-Fi, battery, and charging status. Recording can be done directly to the app and instantly shared or copied to the reel's USB port.

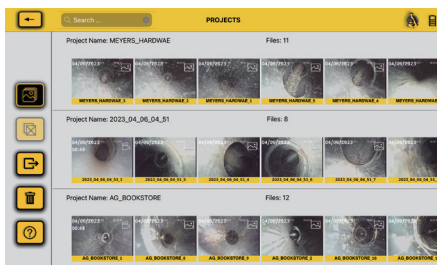


The stainless-steel 0.70" (18mm) diameter HD camera with a sapphire lens and ultra-bright LEDs produces a crisp, clear image of the pipe's interior. The 9mm custom pushrod provides a delicate balance of flexibility and pushing strength usable in lines from 1.5 to 3 inches. The drag-resistant nylon jacketing allows it to navigate multiple bends, tight turns, p-traps, and most toilet traps. Both camera head and spring assembly with built-in 512Hz frequency sonde are field serviceable.

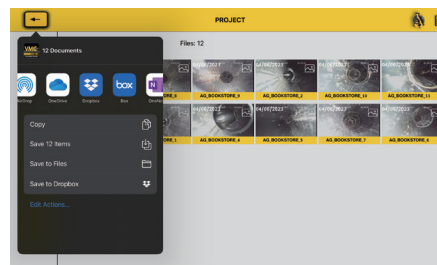
The reel is powered by internal Li-ion batteries, which provide consistent, clean, long-life power. A six-hour charge will provide 12 hours of power with intermittent sonde use.



The VMC app controls all the reel functions



Files are organized in the searchable gallery



Instantly share files or entire projects



Backed by Vivax-Metrotech's superior dealer network, customer service and service centers.

[www.vivax-metrotech.com](http://www.vivax-metrotech.com) | [www.vxmt.com](http://www.vxmt.com)

## Camera Head

<b>Model:</b>	<b>D18-HD</b>
<b>Application:</b>	1-1/2 to 3 inches / 40 to 75mm lines
<b>Dimensions:</b>	0.73" (Dia.) x 0.71" (L) / 18.6mm (Dia.) x 18.1mm (L) without standard skid
<b>Lighting:</b>	48 Lumens
<b>Resolution:</b>	1080p HD
<b>Construction:</b>	Stainless-steel camera housing with sapphire lens
<b>Self-leveling:</b>	None, fixed position, non-leveling camera
<b>Environmental:</b>	Water resistance up to 11 BAR pressure
<b>Focus point:</b>	100mm
<b>Field of view:</b>	90°

## vCamDrain Wireless Reel

<b>Dimensions:</b>	13.7in(L) x 10in(W) x 16.5in(H)
<b>Weight:</b>	70-feet @ 15lbs / 6.8 kg, 100-feet @ 17lbs / 7.7 kg.
<b>Construction:</b>	High impact ABS injection molded housing
<b>Pushrod:</b>	9mm pushrod x 70-feet / 21m or 100-feet / 30m
<b>Display:</b>	Per the mobile device running the vCam Mobile Controller app
<b>Battery life:</b>	Internal Lithium-ion rechargeable battery provides 12 hours of life from a six hour charge
<b>Sonde:</b>	Selectable 512Hz, 640Hz or 33kHz
<b>Environmental:</b>	IP65 and NEMA 4

## What's in the box



## Recommended Locators



vLoc3-Cam and VM-540 Sonde Locators

## Popular Accessories



Tablet Holder Adapter



2.25" Guide Skid



Reel Carry Bag

# INTERMOUNTAIN SALES, INC.

Utility Tools for Today!

**3792 South Lipan Street  
Englewood, Colorado 80110**

**Telephone: (303) 762-1070 or 1-800-373-3212  
FAX: (303) 762-0996 www.intermntnsales.com**

Please visit our website for full product specifications.

[www.vivax-metrotech.com](http://www.vivax-metrotech.com) | [www.vxmt.com](http://www.vxmt.com)

## Vivax-Metrotech Corporation

3251 Olcott Street, Santa Clara, CA 95054, USA

**T/Free: 1-800-446-3392**

**Tel: +1-408-734-3880**

[www.vivax-metrotech.com](http://www.vivax-metrotech.com)

Tag us on social media @vivax\_metrotech



V1.0